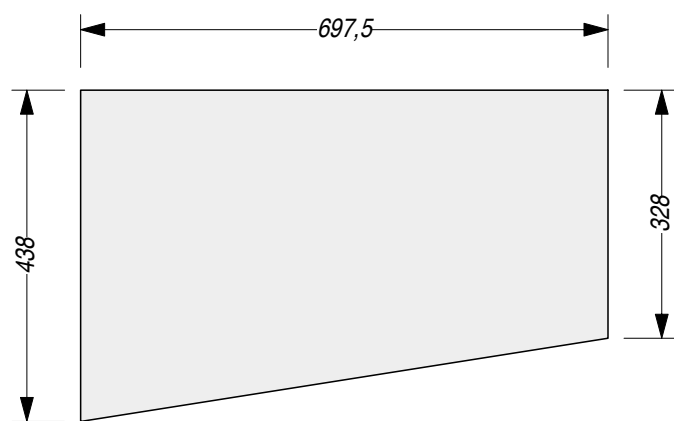


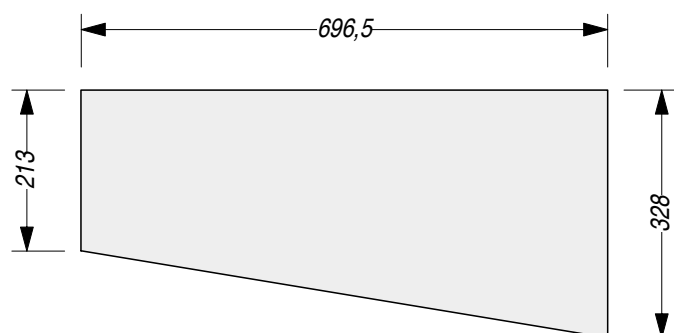
Left Side of Exhauster-to-Cyclone



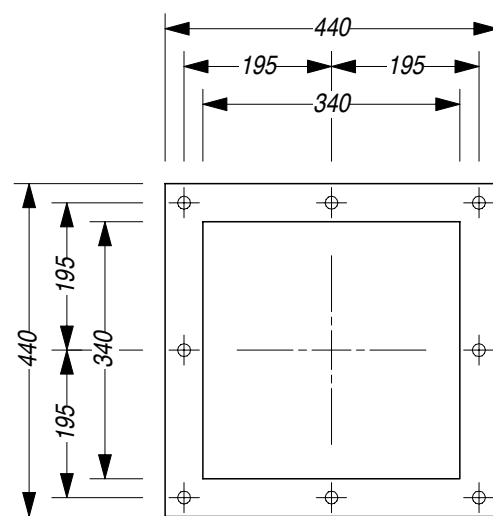
Right Side of Exhauster-to-Cyclone



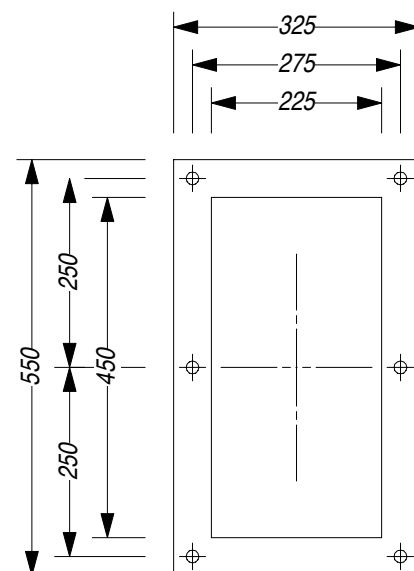
Top of Exhauster-to-Cyclone



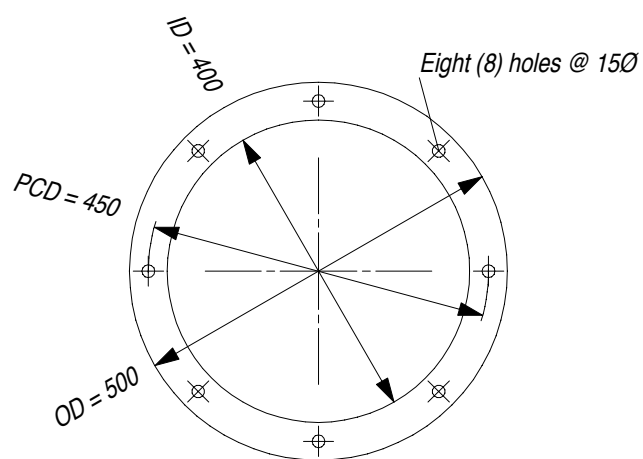
Bottom of Exhauster-to-Cyclone



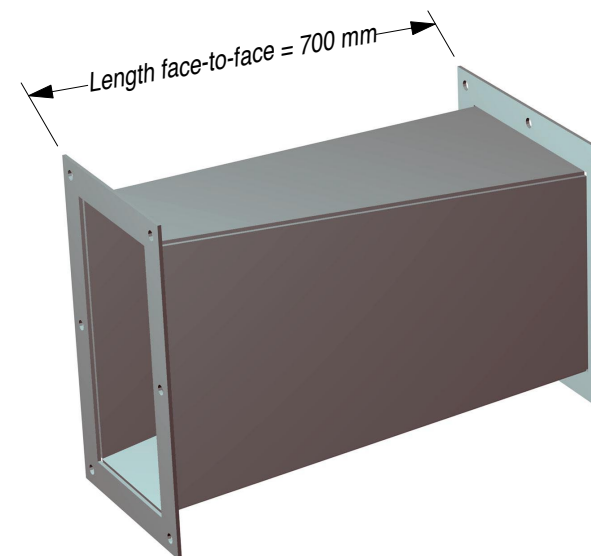
Inlet Flange of Exhauster-to-Cyclone (6 mm)



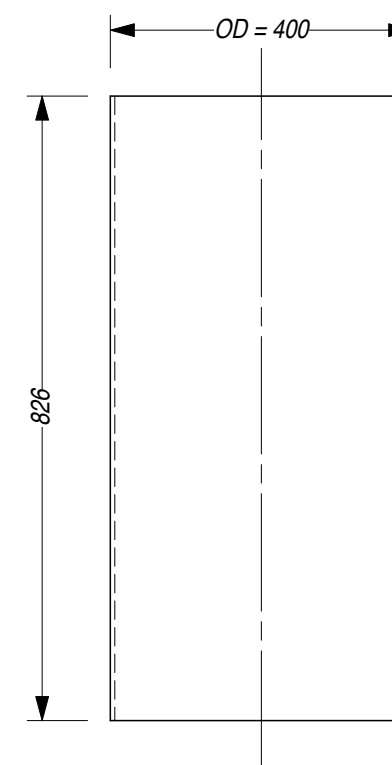
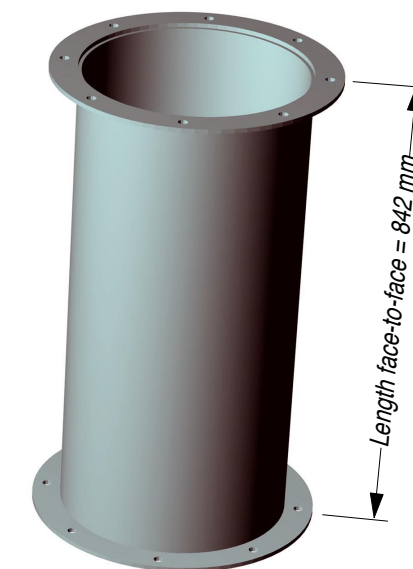
Outlet Flange of Exhauster-to-Cyclone (6 mm)



Two-off - Inlet and Outlet Flanges of Collector-to-Exhauster (8 mm)



3D Views of Connecting Pieces
Below Right: Collector-to-Exhauster
Above Left: Exhauster-to-Cyclone

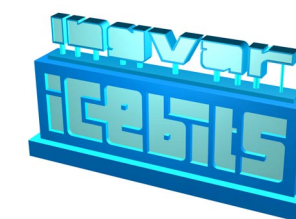


Cylindrical Section of Collector-to-Exhauster

Material:
Black Steel Sheet, 6 mm

Weights:
Collector-to-Exhauster: ~ 50 kg
Exhauster-to-Cyclone: ~ 50 kg

Total Weight (finished): ~ 100 kg



July 2004 - ingvar

LeanFish One

**Exhauster
Connecting Pieces**

Scale: 1:10