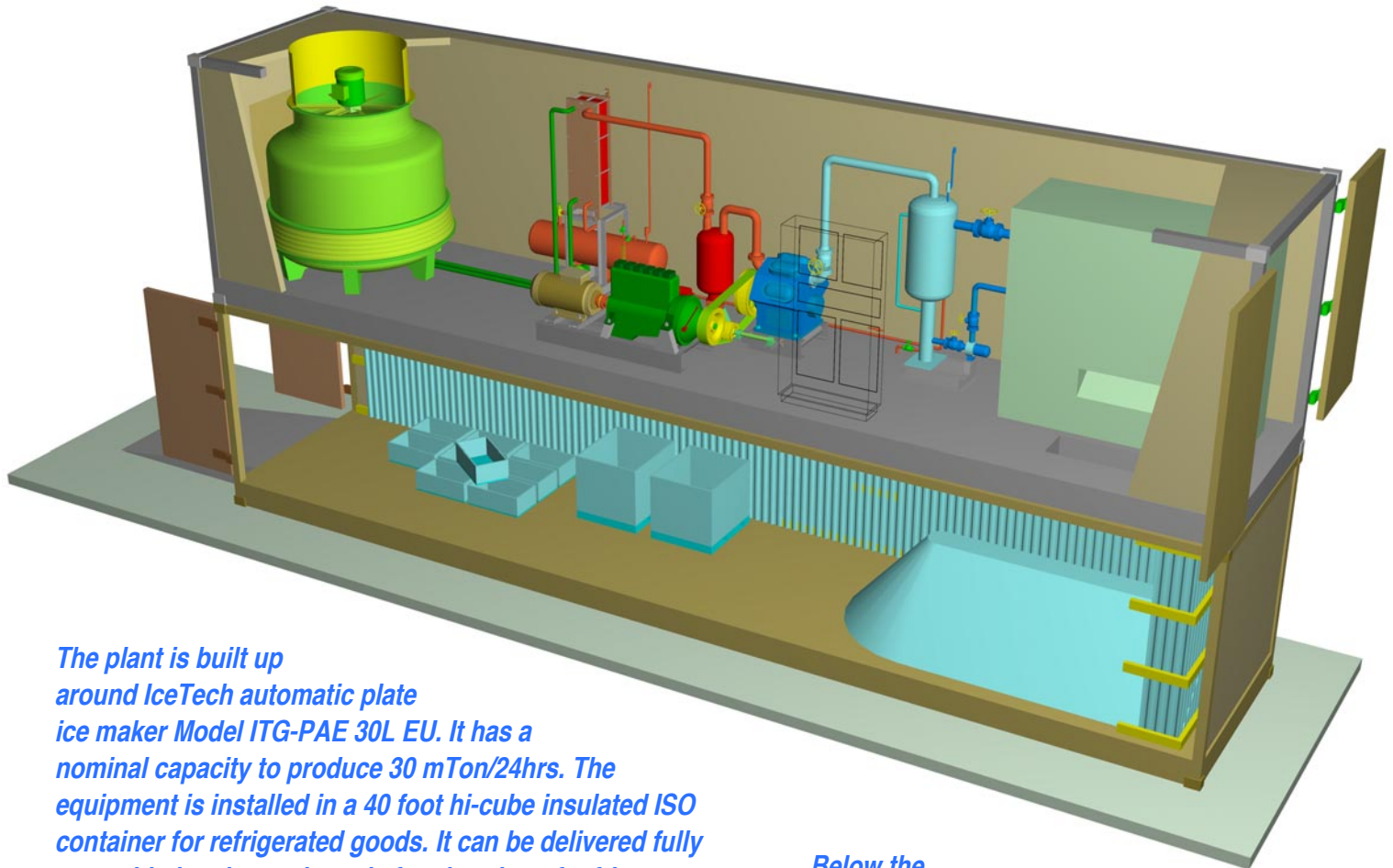


Automatic Plate Ice Plant

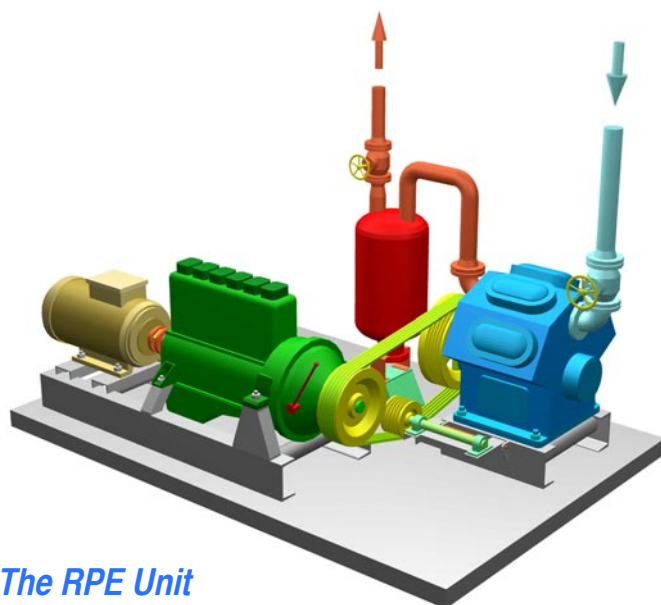
Production Capacity: 30 mTon/24h

Storage Capacity: 25 mTon



The plant is built up around IceTech automatic plate ice maker Model ITG-PAE 30L EU. It has a nominal capacity to produce 30 mTon/24hrs. The equipment is installed in a 40 foot hi-cube insulated ISO container for refrigerated goods. It can be delivered fully assembled and tested, ready for charging of refrigerant (R717, NH₃) and commissioning. Heat from the refrigerating equipment is rejected to the atmosphere through a cooling tower (green) installed inside the container. ...

... Below the machine room is another identical container—also 40 foot long, hi-cube and insulated—to store the ice. The facing sides of both containers are removed to expose the interior (picture above). During production, a bare screw conveyor rotor (without scroll), running along the center of the ceiling in the storage container, draws the ice towards the front door (picture on the back).



The RPE Unit

The RPE Unit

Replacing the conventional compressor-motor package with an RPE Unit (RPE stands for Refrigeration-Power-Electricity) makes the ice factory self-sufficient and fully independent of other sources of energy than diesel fuel. An RPE Unit is built up from a refrigerating compressor, direct or belt driven from the flywheel end of an industrial diesel engine over a manual disengaging clutch. Off the front end the engine drives an alternator, generating electric power for auxilliary motors in the plant—pumps, fans, and the ice conveyor—and for lighting.

*The factories are
built up from 2ndH
(used and reconditioned)
equipment - or NEW*



*Right door leaf and
side of storage container
removed to expose the interior*

You name it, we cool it!

Íshróngl!

***INGVAR
icebits***

***Ishroengl ehf - IceBits ehf
Glosalir 7, Suite 704
IS-201 Kopavogur - Iceland***

***Desk: 00354 5622524 - Pocket: 00354 8961892 - Fax: 00354 5621592
eMail: ingvar@ingvar.is - The Web: www.ingvar.is***